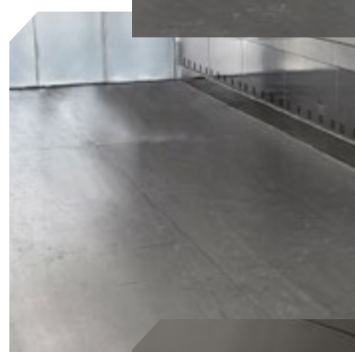


LINEA CARGO  
CARGO COLLECTION

CARGO 05



**PARETI**  
*WALLS*

Acciaio inox AISI-304 scotch-brite  
*AISI 304 st-steel scotch-brite*

**ILLUMINAZIONE**  
*LIGHTING*

Luci rettangolari L90 LED 4000k  
*Rectangular lights L90 LED 4000k*

**ACCESSORI**  
*ACCESSORIES*

Doppia fascia paracolpi perimetrale in acciaio inox  
*Double perimeter bumper bands in st-steel*

**PAVIMENTO**  
*FLOOR*

Acciaio inox liscio lavorato a caldo 304  
*Smooth hot-rolled st-steel 304*